



Homed:In

18 Station Road, Southwater, RH13 9HQ



Dover Close

Southwater, Horsham, RH13 9XX

Price Guide £335,000



Dover Close



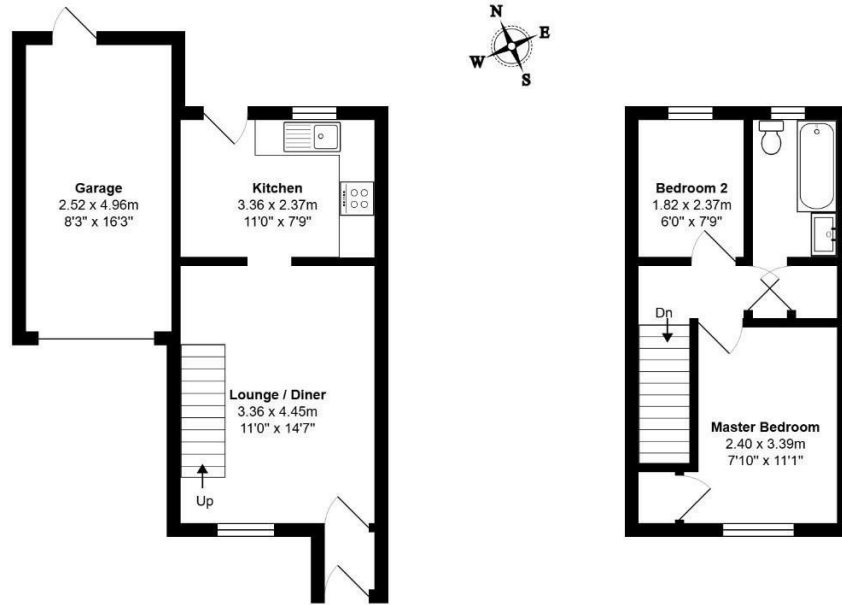
Description

- Excellently Located in Central and Quiet Position
- Bright and Spacious Garden with Garage Access
- Big Square Kitchen Area with Green Views
- VIDEO TOUR in Tab
- Extension Potential to Side and Rear
- Large Garage
- Good Sized Family Bathroom Modernised
- Book Your Viewing Today



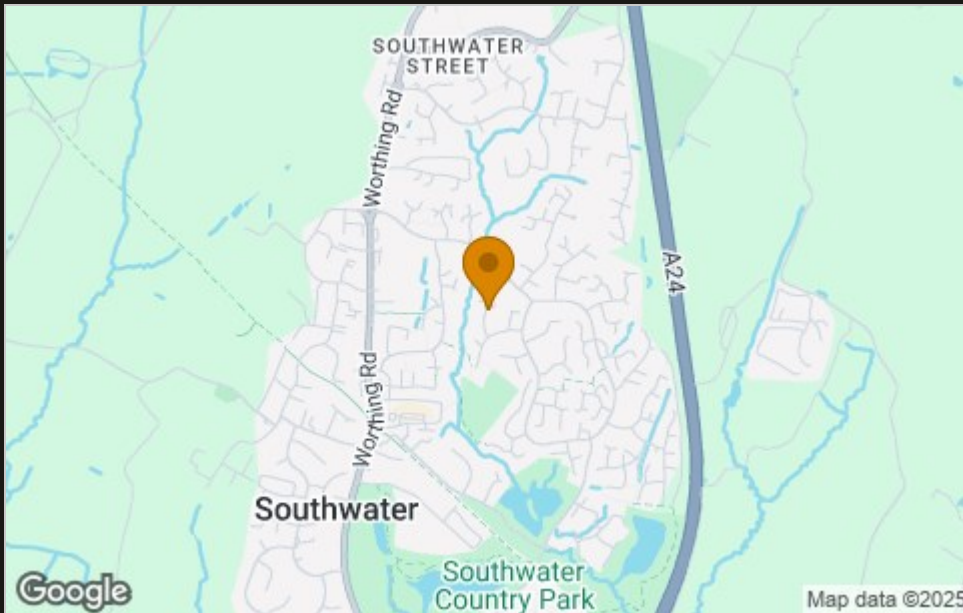


Floor Plan



Total Area: 61.5 m² ... 662 ft² (Incl Garage)
 All measurements are approximate and for display purposes only.
 Copyright 2025. All Rights reserved

Area Map



Viewing

Please contact our Horsham Office on 01403 597595 if you wish to arrange a viewing appointment for this property or require further information.

These particulars, whilst believed to be accurate are set out as a general outline only for guidance and do not constitute any part of an offer or contract. Intending purchasers should not rely on them as statements of representation of fact, but must satisfy themselves by inspection or otherwise as to their accuracy. No person in this firm's employment has the authority to make or give any representation or warranty in respect of the property.

Energy Efficiency Graph

Energy Efficiency Rating		Current	Potential
Very energy efficient - lower running costs			
(92 plus) A			
(81-91) B			
(69-80) C			
(55-68) D			
(39-54) E			
(21-38) F			
(1-20) G			
Not energy efficient - higher running costs			
England & Wales		EU Directive 2002/91/EC	
Environmental Impact (CO ₂) Rating		Current	Potential
Very environmentally friendly - lower CO ₂ emissions			
(92 plus) A			
(81-91) B			
(69-80) C			
(55-68) D			
(39-54) E			
(21-38) F			
(1-20) G			
Not environmentally friendly - higher CO ₂ emissions			
England & Wales		EU Directive 2002/91/EC	

To **GET A FREE VALUATION** Call us on: **01403 597595**
 or email us at: info@homedin.co.uk